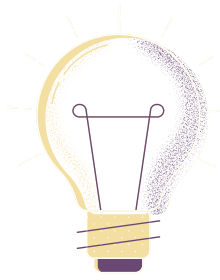


# Students at Risk

## Stakeholders



### VSS-UNES-USU

Coordination of the programme and the involved actors. Centralised contact point for Students at Risk and facilitator of the evaluation process. Match-Maker. Administrator of Scholarships. Fundraising and lobbying for the programme. Initiator of the project.

### Higher Education Institutions (HEI)

Receiver of Students at Risk via match-making. Admission process for Students at Risk. Provider of safe study place. Acts within the frame of HEI-autonomy. Can act as Nominator.

### Embassies & Migration Offices

Embassies and Migration offices evaluate the eligibility of Students at Risk for a student-visa. VSS-UNES-USU provides the financial guarantee. The HEI provides the guarantee of admission.

A Project of  
VSS-UNES-USU

<https://vss-unes.ch/en/students-at-risk/>



### Experts Commission

Consists of experts in the field of humanitarian and migration matters. Supports VSS-UNES-USU in the evaluation of the "at Risk" status. Gives support and advice to both VSS-UNES-USU and the HEI for sensitive Student at Risk cases.

### Financiers

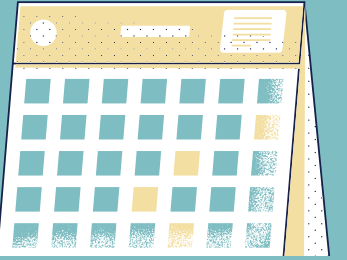
Private or Public Institution contribute financially to VSS-UNES-USU to cover administration costs and the scholarships for Students at Risk. The first aim is to finance a pilot project phase from August 2024-2027.

## HEI involvement

Swiss HEI are encouraged to partner up with VSS-UNES-USU for a pilot project of Students at Risk. The goal is to offer Students, who are denied their basic right to education in their country due to activism or discrimination, a safe space at Swiss HEIs.

A HEI can freely choose how they would like to participate and what they are willing and capable to offer Students at Risk. The workload for a small/big HEI is expected to be about 0-3 additional international students per year/semester.

## Process



01

### Nomination Phase - Various Institutions

- Identification of Student at Risk
- Nomination of Student at Risk to VSS-UNES-USU

02

### Evaluation Phase - VSS-UNES-USU

- Evaluation of nomination according to guidelines
- Risk Assessment by independent experts commission
- Match-Making - Dossier of Student at Risk sent to fitting HEI

03

### Admission Phase - HEI

- Evaluation of study ability
- Admission process for international student

04

### Travel Phase - HEI & VSS-UNES-USU

- Student-Visa application w/ financial guarantee from scholarship
- Travel to Switzerland and arrival
- Student Permit Process

05

### Study Phase - HEI & VSS-UNES-USU

- Monthly Scholarship from VSS-UNES-USU
- Financial Support for Psychological Counselling
- Individual offers from HEIs